



DD 2X4

PORTABLE DOWNDRAFT TABLE



* Selected Models



Welding

Grinding

Deburring

The DD 2X4 is a portable, reliable, and easy-to-use downdraft table for industrial duty applications. Now any fumes, smoke, or dust from your shop activities can be captured right as they are produced, before compromising your indoor air quality.

The table comes fitted with multi-stage spark arrestance baffles, industrial swivel casters, and a push-button reverse-pulse filter cleaning system to help reduce maintenance requirements. Choose from a 1.5HP 1500CFM single phase [120V] motor, or 3.0HP 2600CFM three phase [230/460/575V] for higher capture face velocity. Single phase models include a 15' power cord for plug & play convenience. Many options and accessories are available for the DD 2X4 downdraft table. This table can be built-to-order in almost any configuration.

Flexible, all-in-one, downdraft solution for dust, smoke, or fumes produced from welding, grinding, deburring, cutting, sanding, finishing, soldering, painting, or mixing.

Features:

- Flexible 32" x 48" worksurface
- High capture face velocity (250fpm)
- Multi-stage spark arrestance baffling
- Industrial swivel-casters
- On-demand, reverse pulse cleaning system

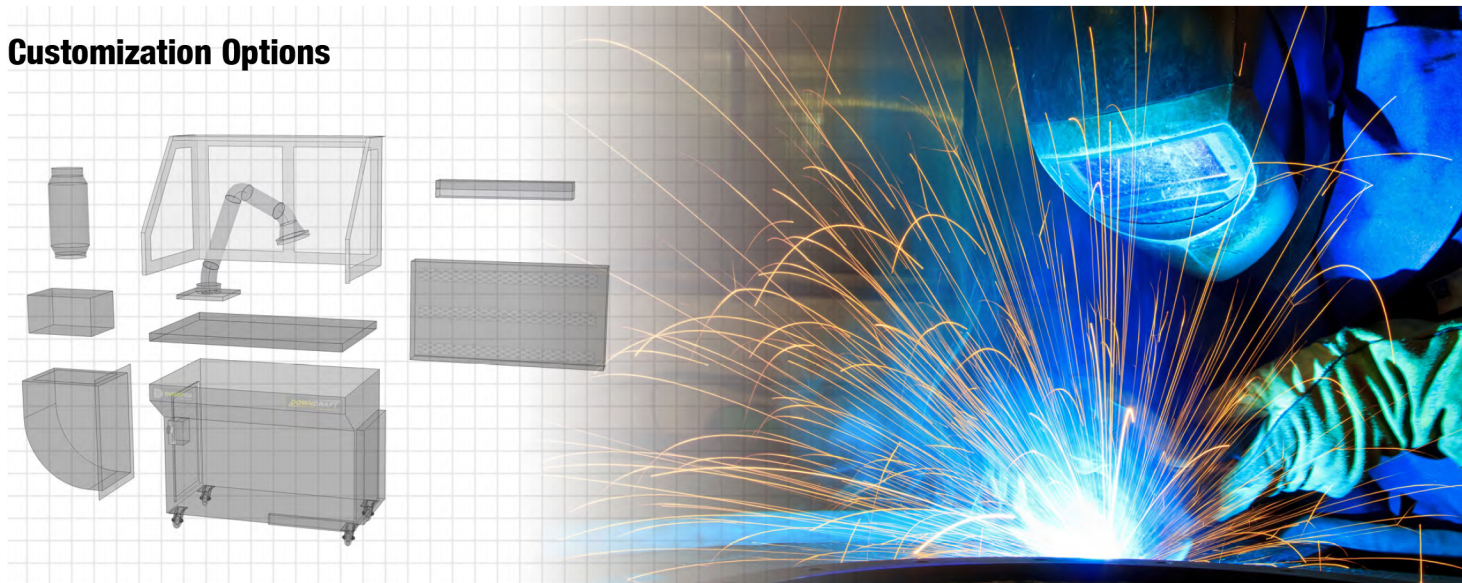
Benefits:

- Simple to use, plug & play design
- Ultra-small footprint & no permanent ducting
- Complies with OSHA guidelines for safe capture of dust, smoke, and weld fumes





Customization Options



Lexan Side & Back Walls



Contain dust and fumes high over your table surface, enables users to trap particulate using 30" high see-through lexan side and back panels.

Hinged Side & Back Walls



Provide extra space for your work pieces, allow longer parts room to overhang your downdraft table by hinging out the side walls.

Backdraft Hood



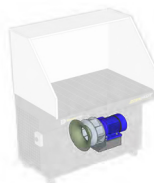
Capture dust and fumes high above your table surface, enables users to draw particulate back away from the operator when operating 12" or more above the downdraft work surface.

Dust-proof Light Kit



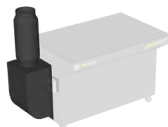
Illuminate your workspace and brighten your operations, the dust-proof light kit provides lighting without the risk of damaging the bulbs.

3HP Motor



The 3 Phase 3HP motor doubles the suction to 2600 CFM, allowing you to properly ventilate a backdraft hood or overcome the pressure from a HEPA or carbon filter.

Side Stack Silencer



Reduce the sound level of your air filtration unit. Silences noise in a duct muffler and projects it above the operator's hearing zone.

48" Booth Walls



Fully enclose your work area with 48" high side and back walls with a top plate. The clean air workstation booth also comes with a backdraft hood and dust-proof light kit.

Minihelic Gauge



Minihelic gauge measures pressure drop over the filters to indicate when the filters must be cleaned or replaced.



Primary Filters

After Filters

NANOTECH XV

MERV 15 efficient cartridge filter captures particles at the submicron level, and surface-loading technology allows dust to be easily dislodged during cleaning with compressed air.



S-2X4-20NF

EFFICIENCY: MERV 15
FILTER MEDIA: NANOFIBER
MEDIA AREA: 320 SQ.FT.
COATING: FIRE RETARDANT
END CAP: OPEN/CLOSED
CLEANING METHOD: COMPRESSED AIR
MAX TEMP: 180° F / 82° C
FLANGE: NONE

HEPA

MERV 17 efficient cartridge filter captures particles at the submicron level, it provides the highest level of filtration efficiency 99.97% at 0.3 micron.



S-HEP-242412

EFFICIENCY: MERV 17
FILTER MEDIA: HEPA
MEDIA AREA: 24" × 24" × 11½"
COATING: NONE
END CAP: OPEN/CLOSED
CLEANING METHOD: DISPOSABLE
MAX TEMP: 175° F / 82° C
FLANGE: NONE

POLYTECH XI

High strength, high efficiency (MERV 11) cartridge filter made from 100% spun-bond polyester that lowers costs, by allowing for water-based cleaning of captured contaminants.

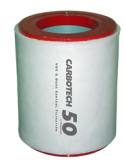


S-2X4-0002

EFFICIENCY: MERV 11
FILTER MEDIA: SPUNBOND POLY
MEDIA AREA: 169 SQ.FT.
COATING: FIRE RETARDANT
END CAP: OPEN/CLOSED
CLEANING METHOD: AIR + WATER WASH
MAX TEMP: 180° F / 82° C
FLANGE: NONE

CARBOTECH 50

Reusable steel canister filled with 50lbs of activated carbon to filter VOC fumes and odors. Double the filter life by flipping the canister top-to-bottom, allowing for adequate contaminant distribution through the media.



S-CCX-50R

WEIGHT: 50 LBS
FILTER MEDIA: CARBON
MEDIA THICKNESS: 2.6"
COVER: 3/4" ANTIBACTERIAL
END CAP: TWIST LOCK REMOVABLE
CLEANING METHOD: NONE
MAX TEMP: 175° F / 80° C
FLANGE: NONE

IMPORTANT : If your equipment was purchased after November 15, 2018, a Replacement Filter Card, featuring filter details and simple instructions to easily order replacement filters, will be located on the filter door.

Specifications

Product No.	Airflow (CFM)	Face Velocity (FPM)	Motor (H.P.)	Pre Filter Type	Primary Filter Type	After Filter Type	Input Power (v/p/hz)	F.L.A (amps)	Noise @5ft. (dB)	Power Cord (ft.)	Weight	
											Gross (lbs.)	Net (lbs.)
WELDING, GRINDING, DEBURRING KIT												
DD-2X4-015N1-WGD	1500	340	1.5	Metal-Mesh	Nano-Fiber	—	120v/1/60Hz	14.2	75dB@ 5 ft.	15	495	310
DD-2X4-030N2-WGD	2600	450	3.0	Metal-Mesh	Nano-Fiber	—	230v/3/60Hz	9.6	77dB@ 5 ft.	—	535	340
DD-2X4-030N4-WGD	2600	450	3.0	Metal-Mesh	Nano-Fiber	—	460v/3/60Hz	4.8	77dB@ 5 ft.	—	535	340
DD-2X4-030N5-WGD	2600	450	3.0	Metal-Mesh	Nano-Fiber	—	575v/3/60Hz	3.9	77dB@ 5 ft.	—	535	340
CLEAN AIR WORK STATION												
DD-2X4-030N2-CAW	2600	450	3.0	Metal-Mesh	Nano-Fiber	—	230v/3/60Hz	9.6	77dB@ 5 ft.	—	595	400
DD-2X4-030N4-CAW	2600	450	3.0	Metal-Mesh	Nano-Fiber	—	460v/3/60Hz	4.8	77dB@ 5 ft.	—	595	400
DD-2X4-030N5-CAW	2600	450	3.0	Metal-Mesh	Nano-Fiber	—	575v/3/60Hz	3.9	77dB@ 5 ft.	—	595	400
VOC & PAINT KIT												
DD-2X4-030S2-SPR	2600	450	3.0	Paint arrestor	Poly	Activated Carbon	230v/3/60Hz	9.6	77dB@ 5 ft.	—	545	350
DD-2X4-030S4-SPR	2600	450	3.0	Paint arrestor	Poly	Activated Carbon	460v/3/60Hz	4.8	77dB@ 5 ft.	—	545	350
DD-2X4-030S5-SPR	2600	450	3.0	Paint arrestor	Poly	Activated Carbon	575v/3/60Hz	3.9	77dB@ 5 ft.	—	545	350
PLASMA CUTTING KIT												
DD-2X4-030N2-PLA	2600	450	3.0	Gravel Bed	Nano-Fiber	—	230v/3/60Hz	9.6	77dB@ 5 ft.	—	545	350
DD-2X4-030N4-PLA	2600	450	3.0	Gravel Bed	Nano-Fiber	—	460v/3/60Hz	4.8	77dB@ 5 ft.	—	545	350
DD-2X4-030N5-PLA	2600	450	3.0	Gravel Bed	Nano-Fiber	—	575v/3/60Hz	3.9	77dB@ 5 ft.	—	545	350



Welding, Grinding & Deburring Kit:



- Side and back walls
- Metal mesh pre-filter
- Grounding lug

Plasma Cutting Kit:



- 2" high steel bar grating
- Slag collection baffle with 3/4" gravel
- Metal mesh pre-filter

VOC & Paint Kit:

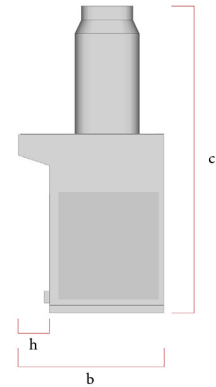
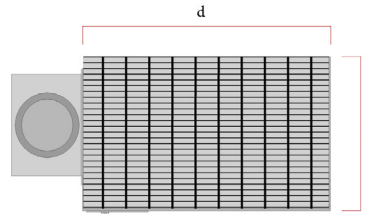
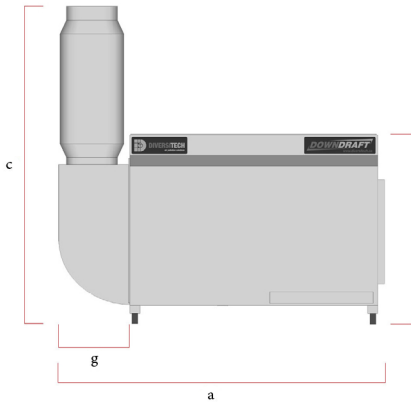


- Side and back walls
- Paint arrestor pre-filter
- Reversible carbon canister afterfilter

Clean Air Workstation:



- Side and back walls (48" high w/top cover)
- Dust & vapor proof light kit
- Backdraft hood



Dimensions **

Model	Exhaust Diameter (in.)	Footprint (in.)			Worksurface (in.)		Table Height [f]	Net Weight (lbs.)	Exhaust [g]	Overhang [h]
		Width [a]	Height [c]	Length [b]	Width [d]	Length [e]				
Downdraft Tables, Standard Size										
DD-2X4 1.5 HP	---	49.5	39	32.5	48	32	39.5	300	10.5	8
DD-2X4 3 HP	8" x 1	60	69.5	32.5	48	32	39.5	300	10.5	8
Downdraft Tables, extended overhang										
DD-2X4-EO 1.5 HP	---	49.5	39	38.5	48	38	39.5	310	10.5	12
DD-2X4-EO 3 HP	8" x 1	60	69.5	38.5	48	38	39.5	310	10.5	12

** Product dimensions are based on base-models and may vary depending on selected product features. Please contact us for an accurate shipping quote.



Innovative Air Solution Specialists

Website: www.airsolutions.us

Email: mail@airsolutions.us

Phone: 901-290-5090

Air Solutions, Inc.

P.O. Box 508

Oakland, TN 38060